



ABN 48 612 666 172
Sydney | Brisbane | Melbourne
Level 20, 2 Market St
Sydney NSW 2000
PO Box Q453
Queen Victoria Building
NSW 1230
Ph (02) 9437 1000

MUSWELLBROOK HOSPITAL REDEVELOPMENT STAGE 3

ELECTRICAL SERVICES UTILITY STATEMENT

1.1 ELECTRICAL SERVICES

The proposed works under Muswellbrook Redevelopment Stage 3 involve the internal fitout and refurb works only consisting of:

- *Community Health within LGF Undercroft*

For the purposed of this REF Memo.

Currently, the entire campus is supplied by an 800kVA Ausgrid kiosk substation which can generate up to 1100A/phase.

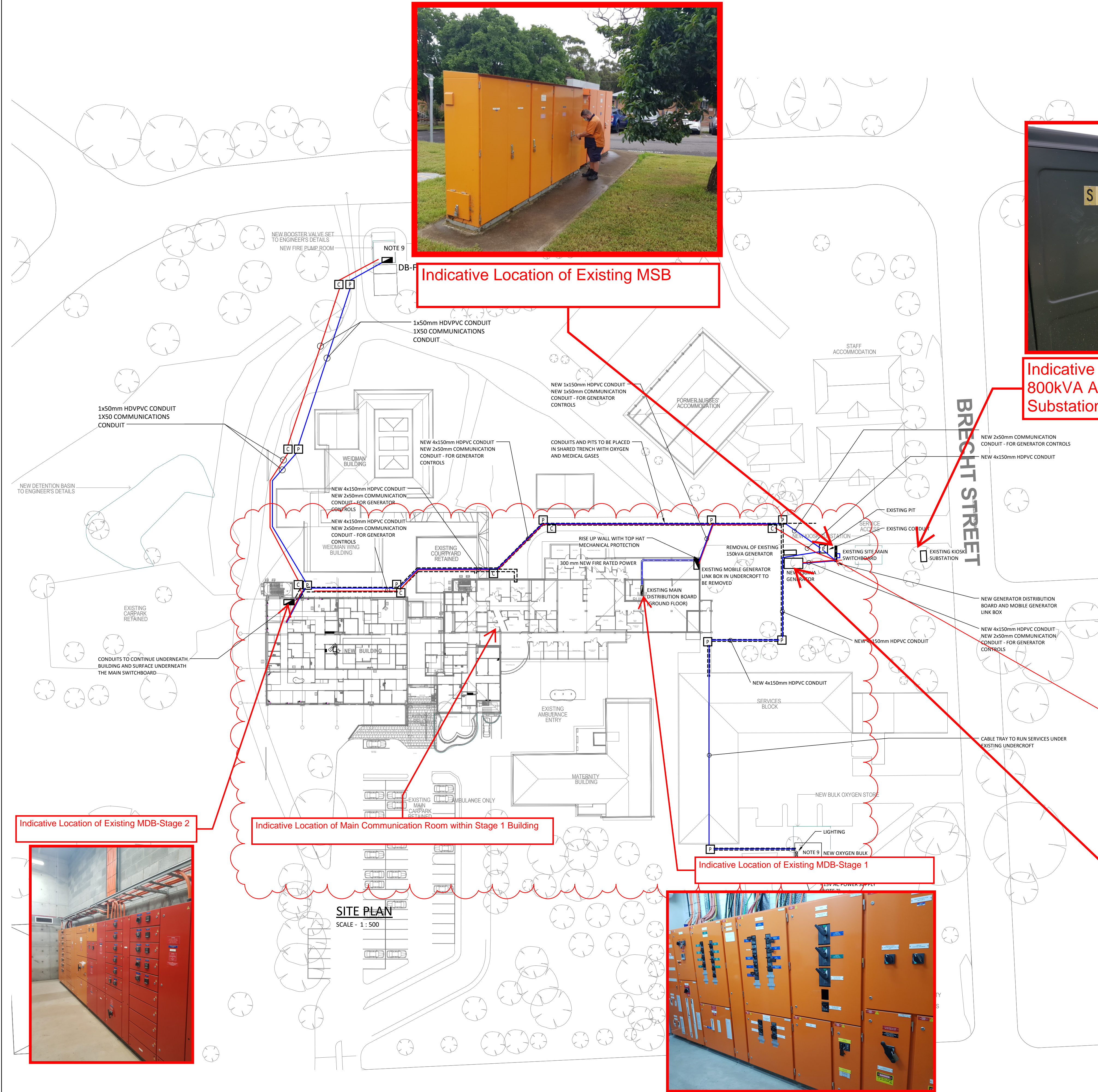
Based on the most recent electricity bills (Aug 21-Feb22) received from Muswellbrook Hospital, the existing maximum demand is approximately 650A/phase.

As part of this project after the delivery of Stage 3:

- The total load on the Substation is estimated to be in the order of 1028 A/phase.

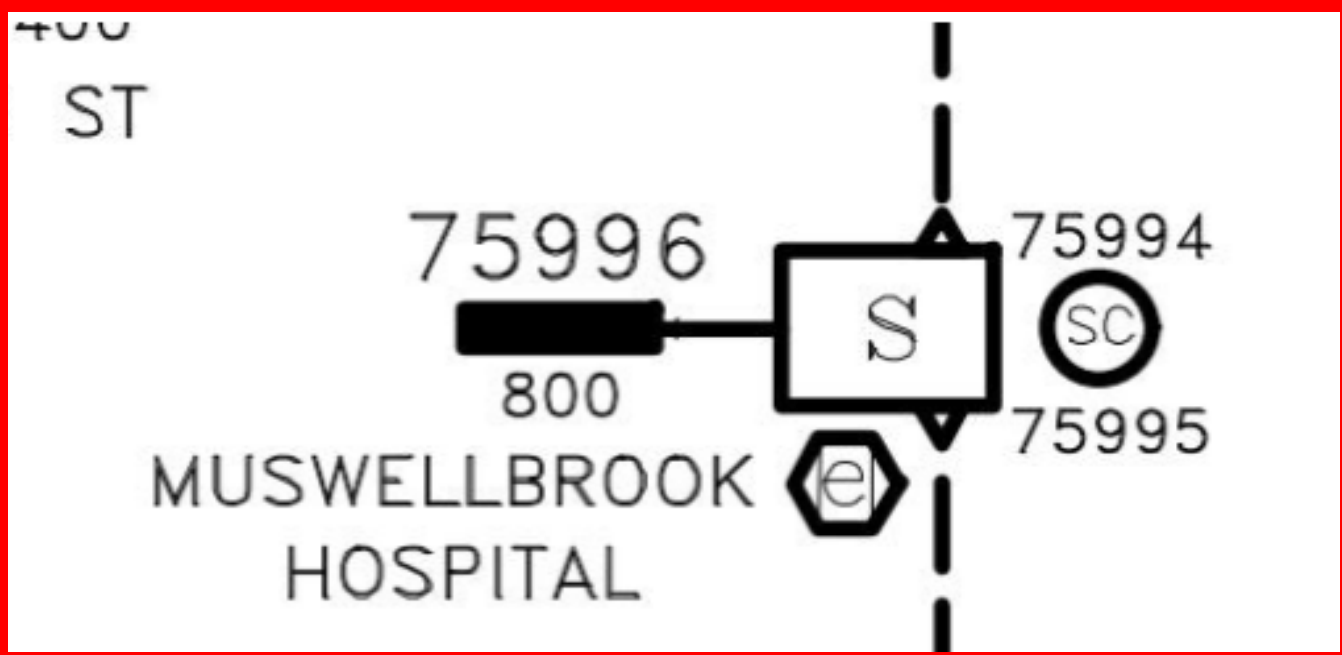
JHA has made an application in 2022 to Ausgrid and it has been confirmed that the existing 1000A fuse within the existing substation can be replaced with a 1200A fuse which would enable us to retain the existing substation. However, this offer was made in 2022 and must be re-confirmed by Ausgrid by lodging another application for connection.

APPENDIX A: DESIGN DISPENSATION - LOCATION OF THE EXISTING AND PROPOSED INFRASTRUCTURE



NOTES:

- 1. THIS DRAWING SHALL BE READ IN CONJUNCTION WITH THE ELECTRICAL SERVICES SECTION OF THE SPECIFICATION, THE ARCHITECTURAL DRAWINGS AND MECHANICAL SERVICES DRAWINGS.
- 2. REFER TO EL-0002 FOR THE LEGEND.
- 3. WHERE POSSIBLE, ALL POWER AND COMMUNICATION CONDUITS SHALL BE INSTALLED IN COMMON TRENCHES WITH THE OTHER SERVICES TRADES. ENSURE THAT THE MINIMUM REQUIRED CLEARANCE IS MAINTAINED BETWEEN SERVICES THAT RUN IN COMMON TRENCHES.
- 4. CABLE PITS WITHIN PATHWAYS SHALL BE FINISHED FLUSH WITH THE FINISHED LEVEL OF THE IN SITU CONCRETE, PAVING OR BITUMEN.
- 5. ALL CONDUITS SHALL BE SEALED TO PREVENT THE INGRESS OF WATER AFTER INSTALLATION OF CABLES.
- 6. OXYGEN TANK POWER OUTLET TO BE 4 PIN, 32A, WITH LOCALLY MOUNTED 3 PHASE 30mA RCD FOR TESTING PURPOSES. 3 PHASE RCD TO BE SUPPLIED BY 32A D CURVE MCB LOCATED WITHIN EXISTING GROUND FLOOR MAIN DISTRIBUTION BOARD.
- 7. COMMUNICATION CONTROL CABLES PASSING THROUGH POWER PITS TO BE CONTAINED IN CONDUITS WITH MINIMUM OF 750mm SEPARATION. REFER TO BOC DOCUMENTATION FOR ALL POWER AND LIGHTING REQUIREMENTS AND LAYOUT OF EQUIPMENT.
- 8. THE CONTRACTOR IS TO ALLOW FOR THE FOLLOWING IN THE NEW FIRE PUMP ROOM 1X12POLE SINGLE PHASE LOAD CENTRE 4X20AMP BREAKERS MDB 1X20AMP SINGLE 0.5, LIGHT SWITCH, C2
- 9.



REPRODUCTION OF DRAWINGS
THIS DRAWING HAS BEEN DOCUMENTED IN COLOUR
AS SUCH, THIS DRAWING IS REQUIRED TO BE PRINTED IN COLOUR
FAILURE TO DO SO MAY RESULT IN LOSS OF INFORMATION
BLACK & WHITE PRINTING MAY BE USED IF SPECIFIC BLACK & WHITE DOCUMENTS HAVE BEEN OBTAINED FROM WGE

H	REVISED CONSTRUCTION	MCB	SMB	20.10.17
G	FOR CONSTRUCTION	MCB	SMB	24.08.17
F	CONTRACT DOCUMENTATION	DX	SMB	18.08.17
E	CONTRACT DOCUMENTATION	DX	SMB	17.08.17
D	CONTRACT DOCUMENTATION	DX	SMB	17.08.17
C	CONTRACT DOCUMENTATION	DX	SMB	17.08.17
B	CONTRACT DOCUMENTATION	DX	SMB	17.08.17
A	CONTRACT DOCUMENTATION	DX	SMB	17.08.17
	DATE			



ELECTRICAL SERVICES
SITE PLAN

CONSTRUCTION

DESIGNED :	SMB	VERIFIED	SMB
DRAWN :	BBB	APPROVED FOR TENDER	
SCALE @ A1 :	As indicated	APPROVED FOR CONSTRUCTION	

PROJECT No.	DRAWING No.	REVISION
30112-1 -SYD-	WGE-EL-0004	H

